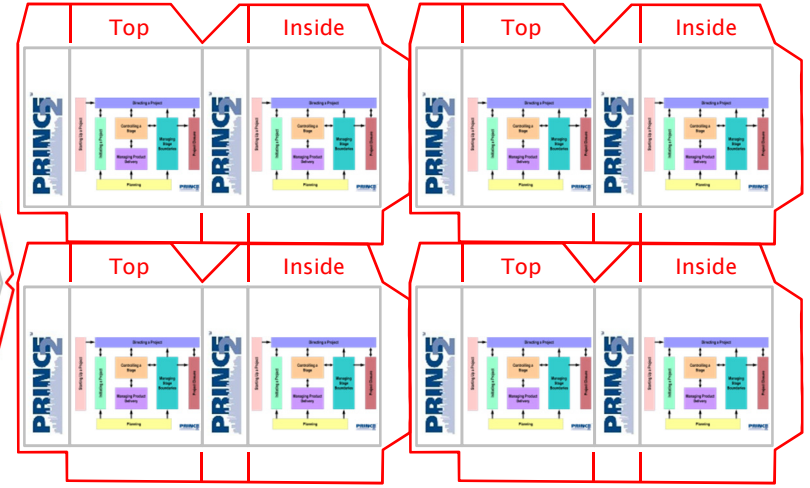
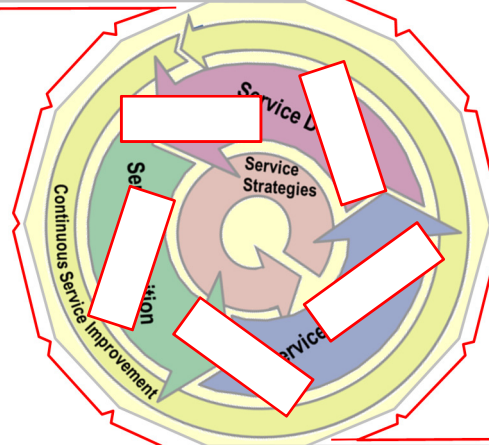
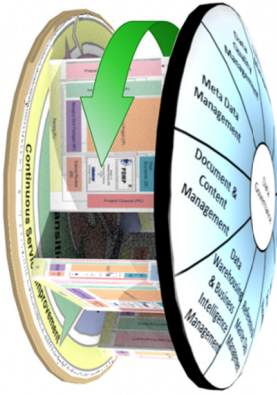


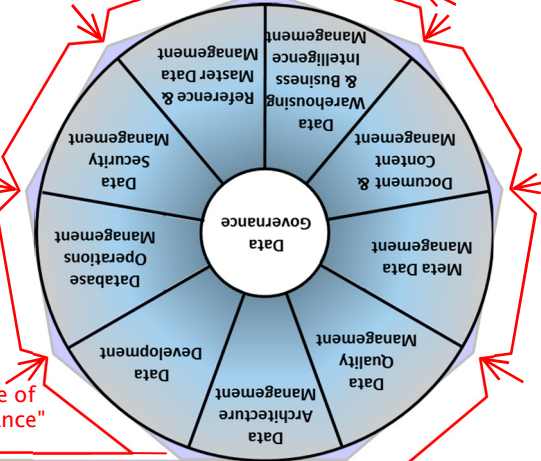
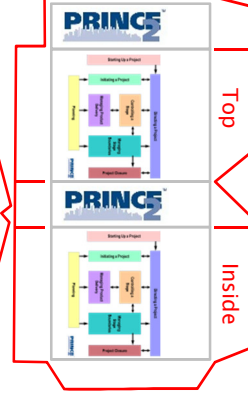
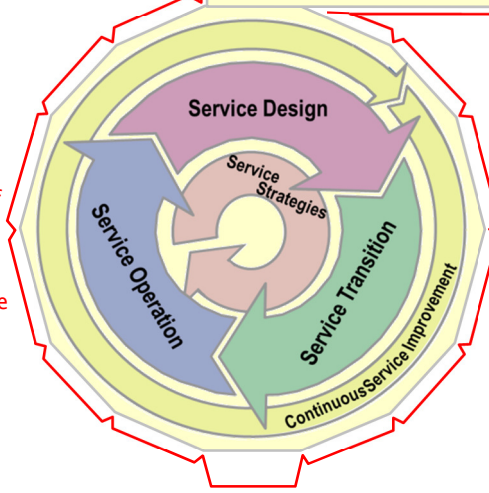
# The Data Management Roundabout

Combining services, projects and strategy

The services (defined by ITIL) keep the business turning, new ones are introduced by projects (managed via PRINCE2 or PMI). All under the umbrella of DAMA.



To make a physical model of this combination print this page on card or stiff paper, use a knife to cut out the shapes (along the red lines). Use PVA glue. Make the 5 project columns before folding out their top and base tabs. Insert and glue the project columns to the base (through the indicated holes) before gluing the underside and edges of the base together. The top is held in a dome shape by the edge strip (working clockwise), once constructed it can be glued to the spread tabs of the five columns.



Each function 2mm under the previous one

Cut up to edge of "Data Governance"

